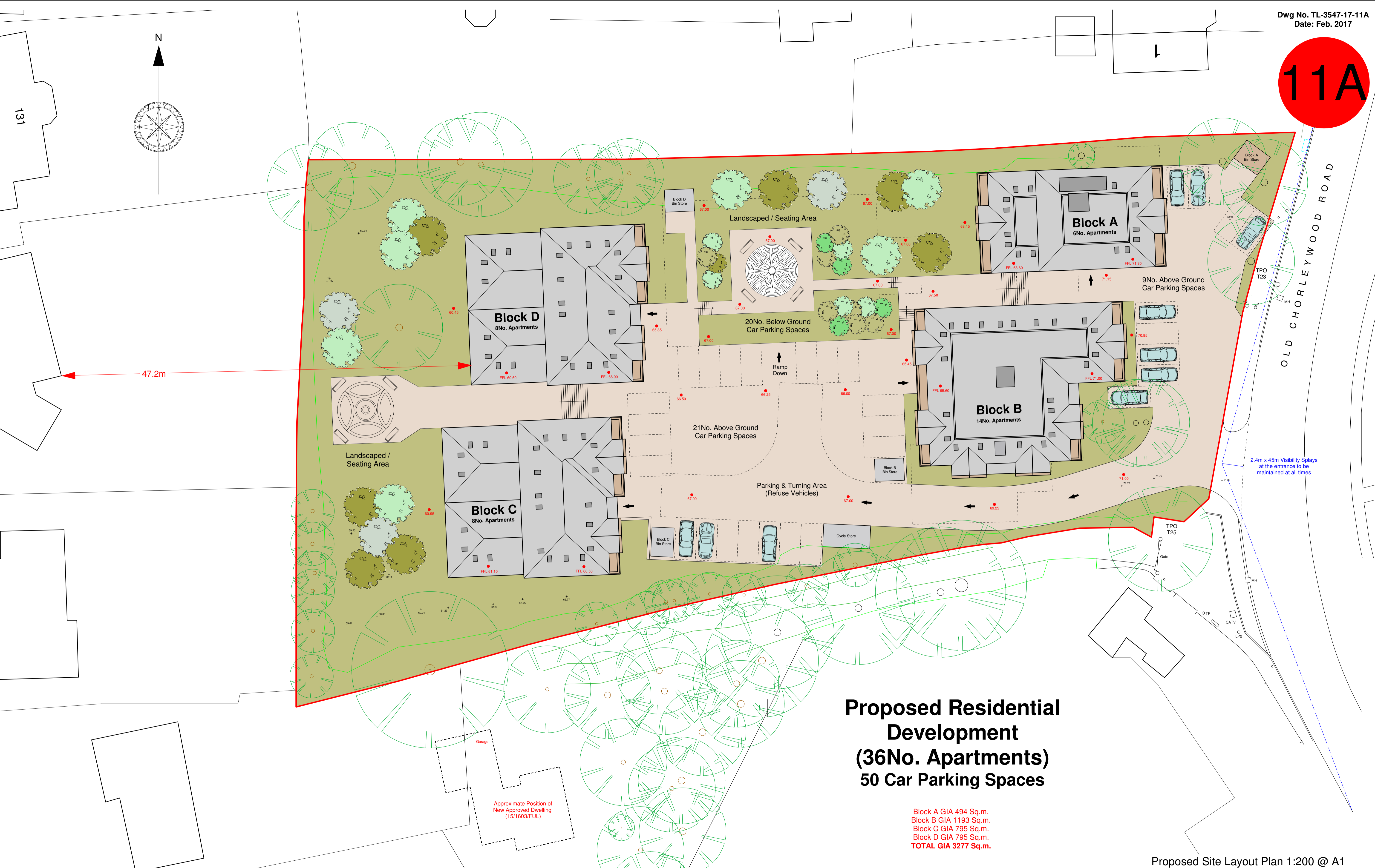


11A



**Proposed Residential
Development
(36No. Apartments)
50 Car Parking Spaces**

Block A GIA 494 Sq.m.
Block B GIA 1193 Sq.m.
Block C GIA 795 Sq.m.
Block D GIA 795 Sq.m.
TOTAL GIA 3277 Sq.m.

Proposed Site Layout Plan 1:200 @ A1

Anglia Design
architects . surveyors
mail@angliadesign.co.uk www.angliadesign.co.uk

London Office: 30 Robin House, Newcourt Street, St Johns Wood, London NW8 7AD
tel: 020 7722 9558 fax: 0870 131 3804
Norwich Office: 11 Charing Cross, Norwich, Norfolk, NR2 4AX
tel: 01603 666576 fax: 01603 764535

**LAND WEST OF OLD CHORLEYWOOD ROAD, RICKMANSWORTH
PROPOSED SITE LAYOUT PLAN**

Proposed Residential Development on
Old Chorleywood Road, Rickmansworth,
Herts, WD3 4EH.

For Simco Homes / Landlink Ltd

Proposed Site Layout Plan